

2024

Surface Pattern Design Competition

Category One

1920's Re-imagined

Sponsored by



Est. 1924

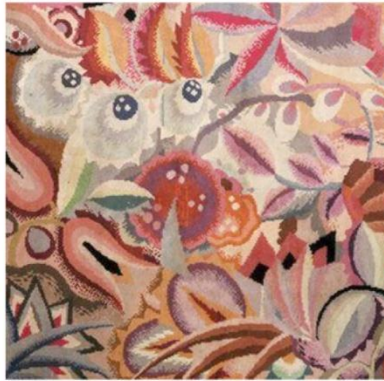
STANDFAST
& BARRACKS

FABRIC PRINTING COMPANY

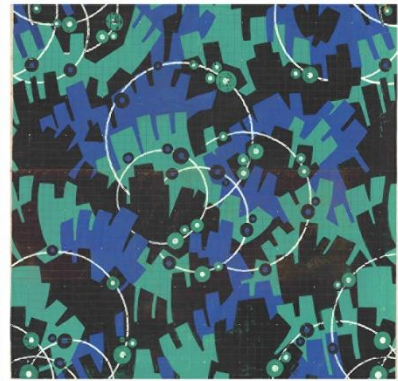
Standfast & Barracks have been printing some of the finest quality fabrics for the high-end furnishing and apparel market for 100 years. Established in 1924, we are celebrating our centenary year in 2024, and would love you to design a print inspired by the 1920s decade.



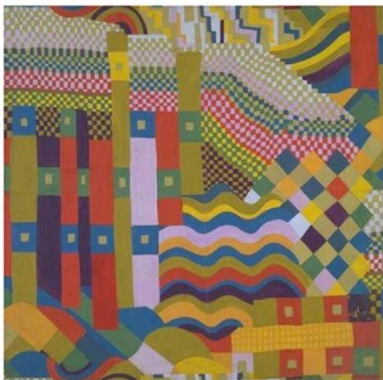
Duncan Grant (copyright the V&A)



Suzanne Guiguichon
(copyright the V&A)



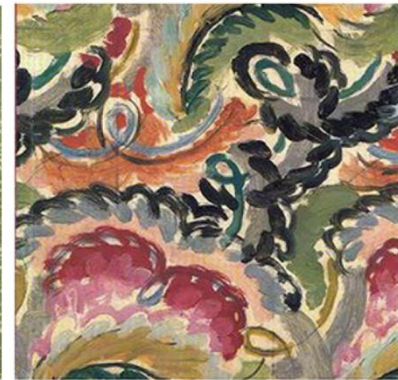
copyright Standfast & Barracks Archive



Susan Collier inspired by Gunta Stölzl
(Bauhaus) (copyright the V&A)



Edward Bawden (copyright the V&A)



Bloomsbury, (copyright
The Charleston Magazine)



copyright Standfast & Barracks Archive



copyright Raoul Dufy



Gunta Stölzl (Bauhaus)
(copyright the V&A)

Please do not copy these documents/artworks in any way - they are for your inspiration only.

Modifying an existing design by re-colouring, re-arranging motifs, changing textures, adding flourishes to existing motifs, changing the lay-out and/or re-sizing elements is not acceptable and has serious implications and responsibilities under international copyright law
AND - THIS IS NOT GOOD PRACTICE

Standfast & Barracks is one of the most versatile and innovative fabric printers in the world. We offer both cutting-edge digital printing, and traditional conventional flatbed and rotary printing. Our talented in-house design team offer a bespoke, trend-led service for interior and fashion brands, using our extensive archive as inspiration. We are passionate about every aspect of fabric production from early concept and design, right through to manufacturing.

Some ideas for inspiration would be:

- Artists of the time (e.g., Vanessa Bell, Raoul Dufy, Duncan Grant, Minnie McLeish, Gunta Stölzl)
- An art movement or group associated with the period (e.g., Art Deco, Bloomsbury Group, Bauhaus, and Expressionism to name but a few!)
- Retro geometrics, shape and expressive mark making
- An archive document from the period
- Beautiful vintage florals

We would love you to be experimental with shape, texture, and colour. Your colour palette is an integral part of the design; you could either be true to the period or put a modern twist on your chosen palette.

You can either choose to create the design digitally or be creative with different applied techniques and processes and then scan your artwork in to create your repeating tile. We encourage you to use traditional techniques including screen-printing, lino, hand-painting etc to give your work a high-end, innovative, and craft-led feel.

Your design must repeat in both the height and the width

Please select a **width** to work from this table – (applies to both digital and conventional printing)

137.2cm	22.44cm
68.6cm	22.85cm
45.7cm	19.6cm
34.3cm	17.15cm

Please select a **height** to work from this table: (applies only to conventional printing)

16cm	45.7cm
32cm	64cm
22.85cm	91.4cm

Digital Printing - There is no restriction on the repeat height or number of colours used

Conventional printing - Number of colours is limited to 20